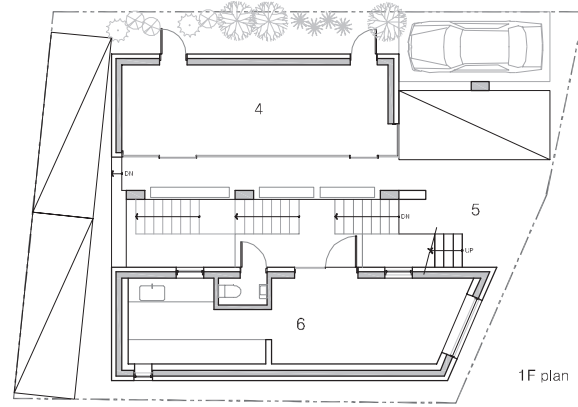
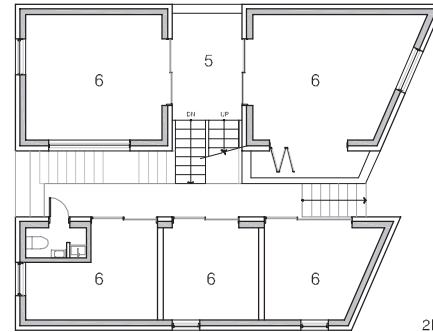


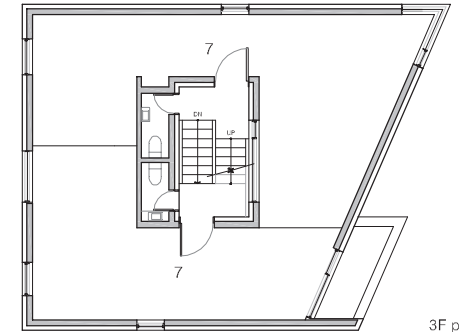
B1F plan



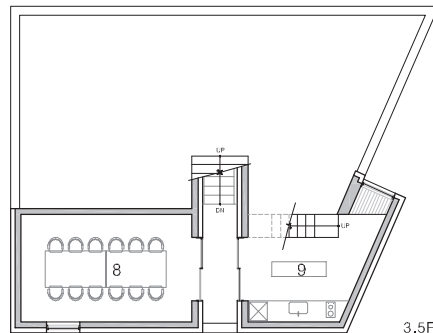
1F plan



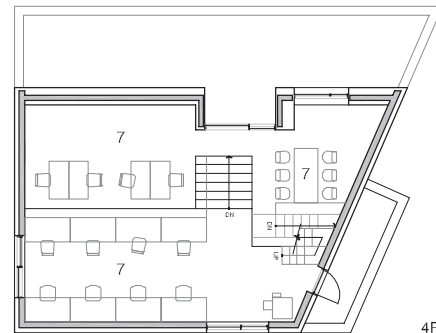
2F plan



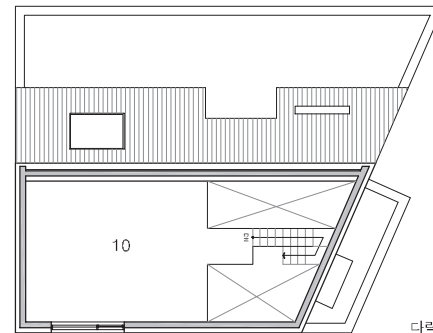
3F plan



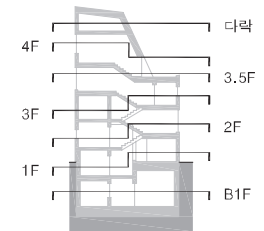
3.5F plan



4F plan



다락 plan



- | | |
|----------------------|----------|
| 1. P-라운지 (지하 공용 라운지) | 6. 상점 |
| 2. Pub | 7. 웨어오피스 |
| 3. 공방 | 8. 공용회의실 |
| 4. B-라운지 (책/음반) | 9. 탕비실 |
| 5. 식당 | 10. 다락 |

